



Follow us on Facebook "Shelby Area District Library"

# Library Lingo

Shelby Area District Library

January 2025

## Upcoming Meetings

Friends of the Library Thursday, January 2 via Zoom at 5pm

Library Board of Trustees Tuesday, January 28 at 5:30pm in the meeting room

The Library will be closed on January 1

## Inside this issue:

- Silent Book Club 2
- Story Hour with Miss Tiffany 2
- Canvas Classes for teens and adults 2
- Gift Basket Winners 2
- Notes from Friends 3
- New Arrivals 4

## TAKE YOUR CHILD TO THE LIBRARY DAY \*Saturday, February 1, 2025\*



Families are invited to participate in *Take Your Child to the Library Day* on Saturday, February 1 from 9am to 12noon. Activities will include: arts & crafts, free book from Read Early, Read Often, scavenger hunt, puzzle & board game exchange, snacks, and giveaways.

On the first Saturday in February, thousands of libraries across the world celebrate *Take Your Child to the Library Day* by offering free, fun, fabulous activities for families.

Your local library is an ideal place for children to play, discover, make friends, and have fun. *Take Your Child to the Library Day* is the perfect time to discover some library magic!

## WATER FOUNTAIN & BOTTLE FILLING STATION



Thank you to the Friends of the Shelby Area District Library for funding our new water fountain with bottle filling station!

## POLAR EXPRESS FAMILY STORYTIME



"Oh what fun it was to have our Polar Express Family Storytime on December 7! Thank you to volunteers Julie McKeen, Connie Near, Jean Lewis, and Rusty Haight.

The evening began with a reading of *The Polar Express*. From there, families were invited to play a Polar Express matching/memory game, do craft projects, get pictures taken by Santa, and enjoy hot cocoa and cookies. After getting Polar Express tickets punched, many of the families then traveled to Getty Park for the tree lighting.

Thank you to all who attended and for your positive feedback. Thank you to our Friends of the Library for sponsoring this storytime. We look forward to making this a yearly event!"

—Tiffany Haight, Library Director

GOOD BOOKS, GOOD COMPANY & PEACE AND QUIET



FOR ADULTS ONLY

## SILENT BOOK CLUB

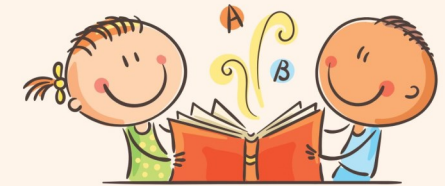
Saturday  
December 28  
1-2pm

How it works: Bring your own book. There is no assigned reading material, so you can choose whatever book you prefer. Join us for an hour of dedicated reading in a cozy atmosphere. You are welcome to bring your own snack or lunch from a local restaurant.



No need to register!

## STORY HOUR



WITH  
*Miss Tiffany*

Fridays from 10-11am  
(December through May)

Stories, activities, socialization, and play in the meeting room

No Story Hour:  
January 10 & 31  
March 28  
April 18

## GIFT BASKET WINNERS



Congratulations to the winners of the gift basket drawing, Sean C. & Tristan S.! Thank you to the local businesses for contributing merchandise and gift certificates.

*Canvas Class at  
Shelby Area District Library*

We will offer two classes of "Winter Landscape" for teens and adults. Registration is required, as space is limited. Call 231-861-4565 or email [tifhaight@shelbylibrary.org](mailto:tifhaight@shelbylibrary.org). Class is FREE and supplies are provided!

Wednesday, January 22 from 5-7pm  
OR  
Thursday, January 23 from 5-7pm

## NOTES FROM FRIENDS

Happy New Year! The Friends of SADL are already making plans for 2025 having met January 2 for our first quarterly meeting of the new year. In addition to the dates below, more activities and opportunities to volunteer will be posted in the library, in the Newsletter, or on the SADL website.

- Friends of SADL Jan. 2 (Zoom)
- National Library Week April 6 – 12
- Friends of SADL Quarterly Meeting April 10
- Friends of Michigan Libraries Annual Meeting April 11
- Garden Sale May 31
- Friends of SADL Quarterly Meeting July 10
- Book Sale August 23
- Friends of SADL Quarterly Meeting October 23
- National Friends of the Library Week October 19 – 25
- Celebration of the Holidays Nov. 18 – 22

Reflecting on the past year, we raised funds to support our Shelby Area District Library, the Dolly Parton Imagination Library, and the Oceana Community Foundation. With a generous donation from the estate of a departed Friend of the Library, we have been able to upgrade the lighting in the library and install a new water station. Plans for assisting with the purchase of new computers and comfortable furniture for the library are in the works for 2025 as well as the installation of a new handicap accessible entrance door. Our three primary fundraisers: the Garden Sale, Good Buy Book Sale, and Celebration of the Holidays, have allowed us to contribute to the library with art & craft supplies, books, treats, gift baskets, items for Story Time like child-sized reading chairs and puzzles, new curtains for the Meeting Room, a rolling white board, refreshments, and more! We have baked cookies for meetings, Library Open House, Celebration of the Holidays, and Author Talks. Donations from the community of holiday items and baskets have helped with the creation of displays for silent auction. Businesses have donated gift cards and merchandise for gift baskets created by Friends of SADL for silent auction or prizes. With the generous donation of supplies and labor by David Shingler and his crew, the gazebo was repaired and painted. Individuals have donated money, books, time, and talent to further boost our ability to fund many of the activities offered at our library! Thank you all for your support!

If you are looking to volunteer a few hours to support your Shelby Library, please join us! We welcome your participation! Contact me [cindymckinnon35@gmail.com](mailto:cindymckinnon35@gmail.com) or complete the information at the library circulation desk in our brochure. We welcome you to become an active member of Friends of SADL.

Wishing you all a happy and healthy New Year!  
Cindy McKinnon, President Friends of SADL

### SHELBY AREA DISTRICT LIBRARY

189 Maple St.  
Shelby, MI 49455  
231-861-4565 (phone)  
231-861-6868 (fax)  
[shelbyadl@gmail.com](mailto:shelbyadl@gmail.com)



[www.shelbylibrary.org](http://www.shelbylibrary.org)

#### LIBRARY HOURS

Mondays 9am-5pm  
Tuesdays 9am-5pm  
Wednesdays 9am-7pm  
Thursdays 9am-5pm  
Fridays 9am-5pm  
Saturdays 9am-1pm



## NEW ARRIVALS



### BECOME A FRIEND OF THE LIBRARY

You can become a Friend by donating your time, talent, or resources to help improve the library in any way. Volunteers are welcome to participate in our projects and fundraisers. No dues are collected but monetary donations are appreciated. Donations are used to support programs, purchase materials, and promote interest in reading and learning.

Name: \_\_\_\_\_  
 Address: \_\_\_\_\_  
 Phone: \_\_\_\_\_  
 Email: \_\_\_\_\_

Please return this slip to the library.  
 Monthly newsletters are sent via email. If you'd like your newsletter sent in the mail, please check this box