



Follow us on  
Facebook  
"Shelby  
Area District  
Library"

# Library Lingo

Shelby Area District Library

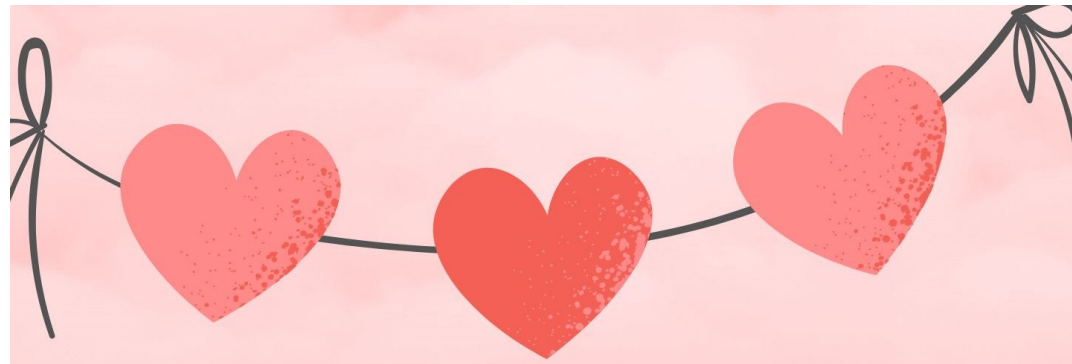
February 2025

## Upcoming Meeting

Library Board of Trustees Tuesday, February 25 at 5:30pm  
Budget Hearing 5:40pm  
Location: Meeting Room  
189 Maple Street in Shelby

## Inside this issue:

Wishes Granted	2
Wednesday Craft Series	2
Take Your Child to the Library Day	2
Notes from Friends	3
New Arrivals	4



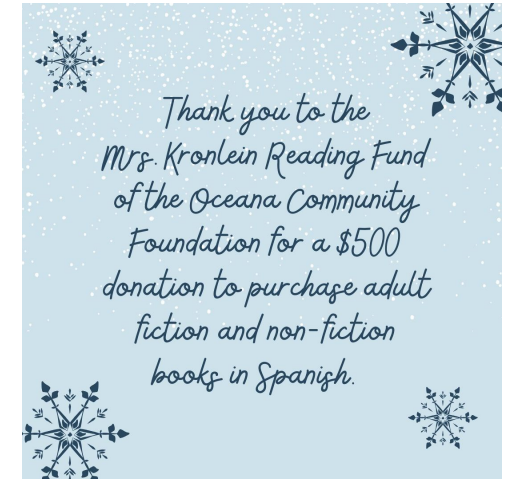
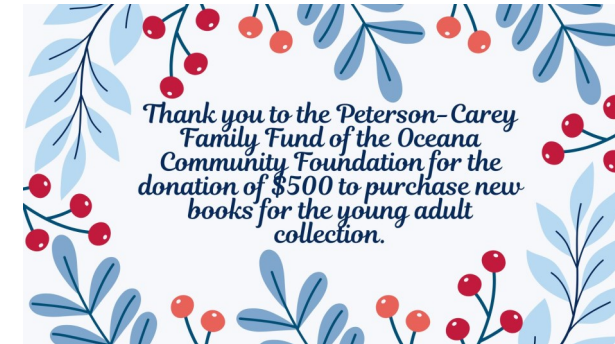
## FEBRUARY IS LOVE YOUR LIBRARY MONTH

- \*TAKE YOUR CHILD TO THE LIBRARY DAY FEBRUARY 1
- \*SILENT BOOK CLUB & COOKIE DECORATING FEBRUARY 22 (ADULTS ONLY--RSVP REQUIRED)
- \*FEATURED BOOK OF THE WEEK (WITH SWEET TREATS TO SAMPLE EVERY FRIDAY)
- \*"STEP BACK IN TIME" SHELBY AREA HISTORIC EXHIBIT (FEBRUARY 24-28)
- \*FUN DISPLAYS \*FREEBIES
- \*MAKE YOUR OWN BOOKMARK STATION

SHELBY AREA DISTRICT LIBRARY  
189 MAPLE STREET IN SHELBY  
231-861-4565

## WISHES GRANTED

Each year, local organizations are invited by the Oceana Community Foundation to share three funding opportunities or "wishes" with donors. We were thrilled to have two of our wishes granted!



*Love Your Library Month*  
CRAFT SERIES (WEDNESDAYS AT 5PM)  
REGISTRATION REQUIRED FOR ALL EVENTS

.....

**FEBRUARY 5 -- FOR ADULTS**



Love Confetti Jar  
Makes a great Valentine's gift! Bring your own 16 oz. glass jar.

**FEBRUARY 12 -- FOR YOUTH AGES 9+ AND ADULTS**



Love Gnomes Coloring Sheet  
Color with markers or colored pencils. Cute enough to frame!

**FEBRUARY 19 -- FOR TEENS AND ADULTS**



Thumbprint Heart Glass Magnet

**FEBRUARY 26 -- FOR YOUTH AGES 9+ AND ADULTS**

"Made with Love" Note Card Set  
Set of 4 homemade greeting cards

Shelby Area District Library 189 Maple Street in Shelby

TO REGISTER:  
CALL 231-861-4565  
EMAIL [tifhaight@shelbylibrary.org](mailto:tifhaight@shelbylibrary.org)

## TAKE YOUR CHILD TO THE LIBRARY DAY



Saturday  
February 1  
9am-12noon

Families are invited to participate in our *Take Your Child to the Library Day* event.

Penguin scavenger hunt, take home snack, board games, play time, free book from Read Early, Read Often, and more.

No registration needed...simply stop by between 9am-12noon!

## NOTES FROM FRIENDS

The Friends of S.A.D.L. held our first meeting of the new year January 2 by Zoom with 11 members attending. We approved spending requests from Library Director Tiffany Haight for Winter Craft Kits, Canva Pro Renewal, Newsletter printing, and January Canvas classes . The members also approved giving 10% of our fundraising profits for 2024 to the Community Foundation for Oceana County. The success of our most recent fundraiser Celebration of the Trees, was applauded with more than \$4,000 raised after expenses. Thank you also to our very generous donors for their end-of-the-year private donations to Friends of S.A.D.L.

We also discussed a new project to benefit our gardening community, a “Seed Library.” We plan to initiate this idea in the spring by allowing patrons to check out vegetable and flower seeds as well as receiving planting and gardening tips. Read more about this initiative in the March Library Lingo!

### Dates for 2025 Activities and Fundraisers are:

- National Library Week April 6 - 12
- FOML Annual Meeting April 11
- Friends of S.A.D.L. Meeting and election April 10
- Garden Sale – May 31
- Friends of S.A.D.L. Meeting July 10
- Book Sale – August 23
- National Friends of Library Week October 19 - 25
- Friends of S.A.D.L. Meeting October 23
- Celebration of the Trees Nov. 18 - 22

There are always opportunities to be a Friend to assist with the many activities, art classes, workshops, fundraisers offered at our Shelby Library. Next time you visit the library, pick up our brochure for the Friends of S.A.D.L. to find out how you can become more active as a volunteer or speak to Library Director Tiffany! We do not collect dues! You are a Friend of S.A.D.L. each time you volunteer!

Cindy McKinnon  
President, Friends of Shelby Area District Library

### SHELBY AREA DISTRICT LIBRARY

189 Maple St.  
Shelby, MI 49455  
231-861-4565 (phone)  
231-861-6868 (fax)  
shelbyadl@gmail.com



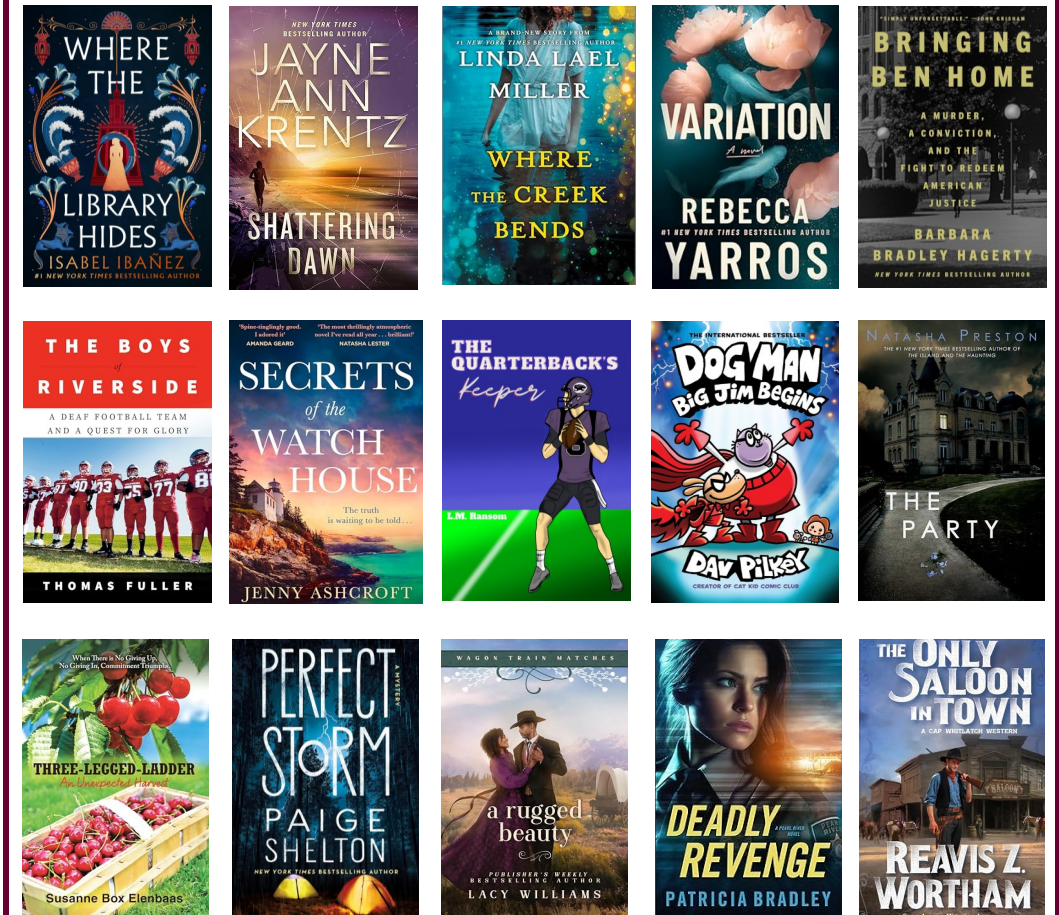
[www.shelbylibrary.org](http://www.shelbylibrary.org)

#### LIBRARY HOURS

Mondays 9am-5pm  
Tuesdays 9am-5pm  
Wednesdays 9am-7pm  
Thursdays 9am-5pm  
Fridays 9am-5pm  
Saturdays 9am-1pm



## NEW ARRIVALS



### BECOME A FRIEND OF THE LIBRARY

You can become a Friend by donating your time, talent, or resources to help improve the library in any way. Volunteers are welcome to participate in our projects and fundraisers. No dues are collected but monetary donations are appreciated. Donations are used to support programs, purchase materials, and promote interest in reading and learning.

Name: \_\_\_\_\_  
Address: \_\_\_\_\_  
Phone: \_\_\_\_\_  
Email: \_\_\_\_\_

Please return this slip to the library.  
Monthly newsletters are sent via email. If you'd like your newsletter sent in the mail, please check this box